

# GIS Mapping and Image Processing

## Program Services

- Image Processing and Spatial Analysis
- Geo- and Ortho-Correction of Data
- Digital Elevation Model (DEM) Extraction and Processing
- 3-D Image Profiling and Visualization
- Cartographic Quality Mapping
- Mosaicking of Imagery
- Digitizing and Data Conversion
- Database Development
- Slope, Aspect, Shaded Relief and Contour Generation
- Viewshed and Line-of-Site Analysis
- Ecological Modeling
- Geologic, Soils, Vegetation, and Hydrologic Mapping

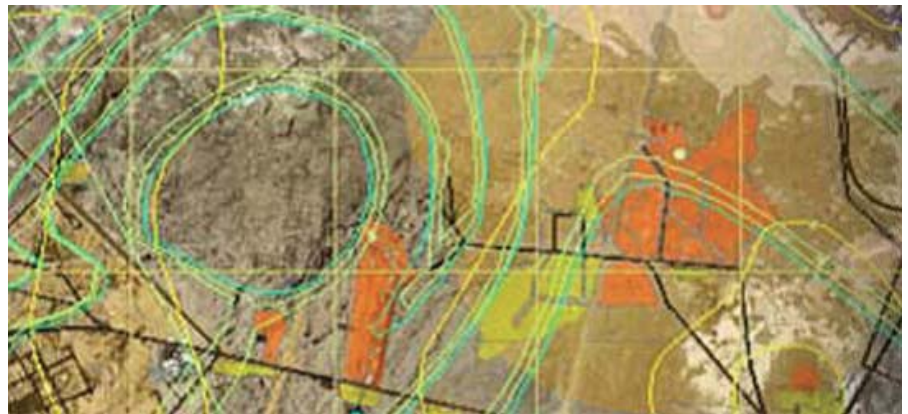
## Contact

### Greg Halsey

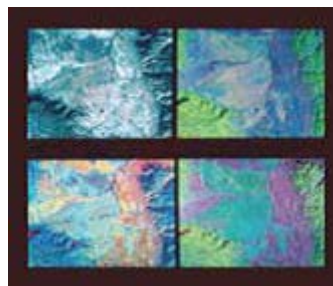
Vice President, Environmental Management Services

760-446-6400

ghalsey@epsilonsystems.com



At Epsilon Systems, we believe that at the heart of environmental problem-solving and solid decision making is accurate geographic information. This notion has elevated the company's reputation and its ability to help people make better decisions in industries such as oil/gas/mineral exploration, natural resource management, urban and regional planning, environmental monitoring, forest management, engineering, telecommunications, utilities, and transportation.



From simple thematic mapping to advanced remote sensing and everything in between – Epsilon Systems' fully integrated approach to spatial information management enables us to provide accurate, timely, and cost-effective solutions for all your geospatial information needs.

