

24" High Definition Panoramic Display

Key Features

- 24.0" Color Active Matrix Liquid Crystal Display
- High Resolution 1920 x 1200 (WUXGA)
- Tested/Passed EMI Testing IAW MIL-STD-461F, Vibration Testing, MIL-STD-167-1 and Shock Testing IAW, MIL-S-901D
- Remote Control
- VGA, DVI-D, HDMI, RF Tuner (NTSC), Composite, Audio
- Bonded Anti-Reflective Protective Window
- Wide Viewing Angle ± 89 Degrees
- 10U Rack Mount



Model: REP-24HDW-10U110TV

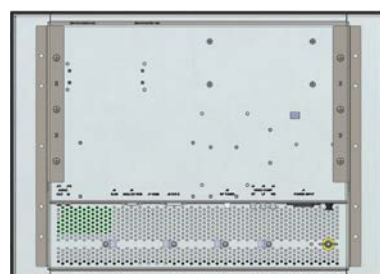
The REP-24HDW-10U110TV is Epsilon Systems' 24" display offering significant benefits with respect to dimensions, ruggedization and video quality. The 24HDW combines unmatched mechanical integrity with exceptionally low weight to provide a unique, rugged display solution, especially for applications where space and weight are critical.

The REP-24HDW-10U110TV features a first-class 24" Active Matrix Liquid Crystal Display 1920 x 1200 (WUXGA) offering excellent performance in terms of brightness, crispness, contrast and viewing angle. The bezel and mounting can be customized to address virtually any mounting need in any application. Additionally, the REP-24HDW-10U110TV combines this high level of performance and versatility with a very competitive price/performance value.

Epsilon Systems' displays have been designed and qualified for application in the most hostile environments. Epsilon Systems' rugged displays are well suited for specific naval combat, army and airborne applications.



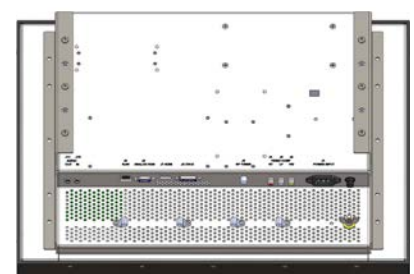
ISO 9001:2015 Certified



BACK



SIDE



BACK ISOMETRIC

24" High Definition Panoramic Display

Contact

Brian Gallatin

Vice President & GM,
Advanced Products Group

757-961-4526

FlatPanels@epsilonsystems.com

5482 Complex Street, Suite 109
San Diego, CA 92123

619-702-1700

Headquarters and Corporate Office
9242 Lightwave Ave., Suite 100
San Diego, CA 92123

TECHNICAL SPECIFICATIONS

Active Display Area	24" TFT Active Matrix LCD 518.4 x 324.0 mm (20.41" x 12.96")
Display Resolution	1920 x 1200 (WUXGA)
LCD Technology	U-type 6 CCFTs (Cold Cathod Fluorescent Tube)
Input Interface	VGA (HD15) DVI-D, HDMI, RF Tuner (NTSC), Composite, Audio (In/Out)
Brightness	400 cd/m2 (Minimum)
Viewing Angle	± 89 Degrees All Directions (Typical)
Contrast Ratio	1000:1 (Typical)
Display Colors	16M
Power Supply	115 VAC (-48 VDC option); 104 Watts (Typical)
Model Number	REP-24HDW-10U110TV
User Controls	Volume Up/Down, Brightness/Dim, Power, Channel Up/Down, Menu, Mode

DESIGNED TO MEET RIGOROUS MILITARY SPECIFICATIONS

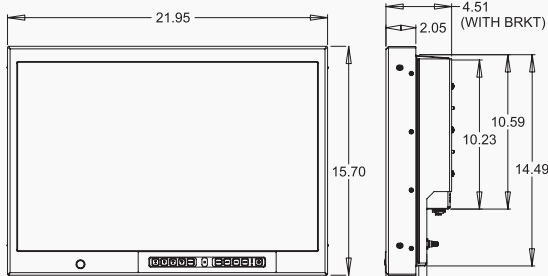
MIL-STD-167-1, Type 1	Vibration
MIL-STD-810	Environmental
MIL-STD-901D Grade A, Class I, Type A	Shock
MIL-STD-461F	EMI/EMC

ENVIRONMENTAL SPECIFICATIONS

IP Rating	IP65 Drip Proof
Operating Temperature	0°C to 60°C
Storage Temperature	-25°C to +65°C
Humidity	5 to 95% @ RH Non-condensing

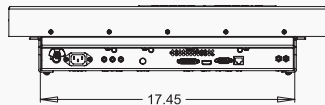
DIMENSIONS INCHES MILLIMETERS

	INCHES	MILLIMETERS
Height	15.70"	398.7 mm
Width	21.95"	557.5 mm
Depth	4.51"	114.5 mm
Weight	28 lbs	12.7 kg

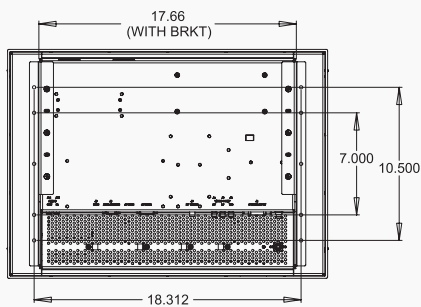


FRONT

SIDE



BOTTOM



BACK